

# Modular IT Room



**TEKNE EUROPE S.r.l.**  
via Roma, 21  
20090 SEGRATE (Milano) Italy  
Tel. + 02 2695.2547 T/Fax + 02 213.5500  
[info@tekneurope.it](mailto:info@tekneurope.it)

## ModularIT Room – Protects Your Critical Assets



**Traditional fire rated doors and wall materials (plasterboard, block, concrete, etc.) will only keep the *flames* out of your comms room.**

**They will not protect against the**

***heat, smoke, dust and fire fighting water***

**that will cripple your systems and corrupt your data in the event of an *external* fire.**

## **Other physical dangers to critical systems not protected by traditional building methods include:**

### **Explosion**

- **Electromagnetic pulses**
- **Broken glass and exposure to the elements**

### **Vandalism & Theft**

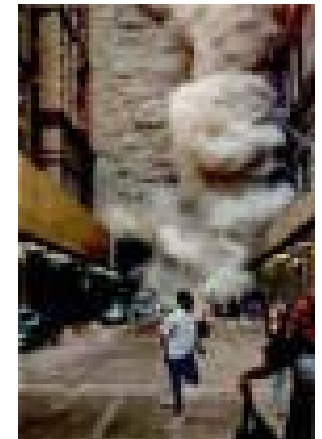
- **Plasterboard panels are very easily breached**

### **Dust – circulated by air conditioning systems**

- **General build up in ceiling voids**
- **Plaster dust from damaged plasterboard**

### **Flood**

- **Burst water pipes**
- **Weather related**

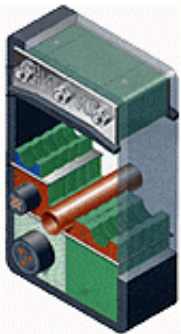


# The Solution: The ModularIT Room System



- Steel faced pre-finished wall and ceiling panels with a high performance thermal barrier core that lock together to form a protective enclosure of any size
- Sealed cable/service entry points

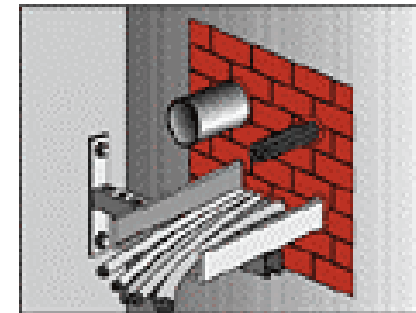
## Cable/Pipe Entry Options:



**Transit Frame to protect each cable**



**Intumescent Fill**



**Removable blocks**

## **Insulated high security fire doors**

- **Steel faced with same core material as panels**
- **Double rebated with seals all round**
- **4 sided steel frame with rebated threshold**
- **Locking system of your choice - simple key, digital keypad, swipe or proximity access**



**Heavy Duty Electric Release**



**Door and a half with magnetic lock**



**Single Door – rebated on 4 sides**

- **Built slab to slab for partial protection (but better than plasterboard)**
- **5 sided box – walls, ceiling and doors**
- **Optional steel floor to provide additional protection against electromagnetic pulses (generated in an explosion) and radio frequencies**



- **Ceiling panels are self supporting up to 6m spans**
- **Over 6m use existing roof structure or an independent steel frame**

- **Quick and clean to build**
- **Modularity ensures ease of extension or complete relocation**
- **Does not depend on or affect the fabric of the building – hence the system is ideal for leased or listed buildings and an ideal product for leasing itself**

## Build in an office, warehouse or car park with a weatherproof roof



12m x 5m room built in a storeroom



20m x 15m room built in a warehouse (in under 2 weeks)



8m x 5m room built in a second floor office area (in 3 days)





9m x 5m room built in a car park adjacent to a loading bay.

Built in the factory in 2 halves, delivered to site and assembled in a few hours.

**Shell only or complete fit out and project management available:**

**UPS – Electrical Installation - Air Con – Fire Suppression – Raised Floor  
Server Racks – Switches – Environmental and Security Monitoring**

# Testing and Certification



**Loss Prevention Certification Board: F90  
98 minutes integrity plus 93 minutes insulation**

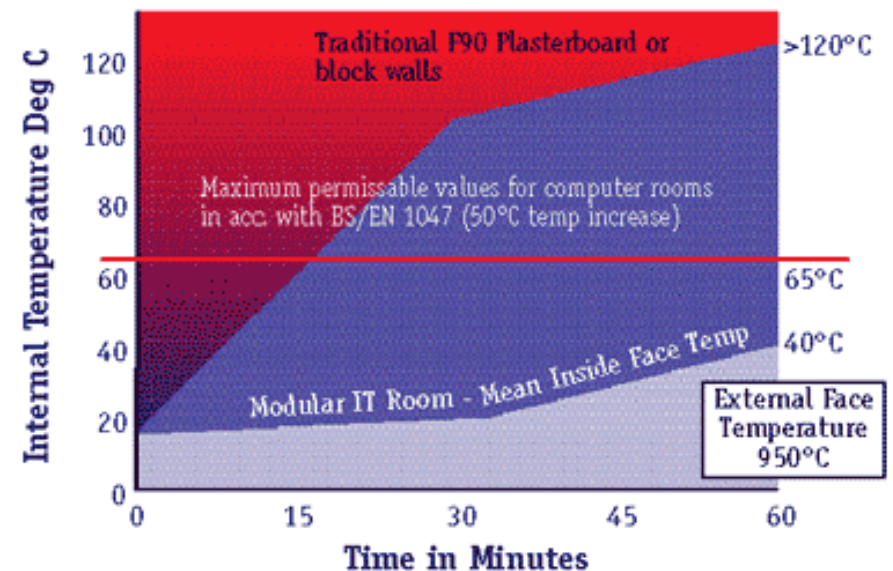
The system was furnace tested by the LPCB to 950 deg.C. according to BS 476 pt22 at the Building Research Establishment.

At 30 minutes there was ‘no discernable rise’ at the unexposed face.

At 60 minutes the mean temperature was just 40 deg.C. at the unexposed face.

**BS/EN1047** – The EU standard for resistance to fire for computer room construction – stipulates a maximum *increase* of 50 deg.C.

**The patented core material is structurally stable and contains no CFC’s or any other elements that are harmful to the environment**



## Advantages of ModularIT System Over Traditional Build

- Quick and clean to build to any size in any space
- Easily extended or relocated
- Protects critical hardware and data from flame *plus* heat, water, smoke, dust, EMP, vandalism, sabotage, theft and explosion
- Steel skin provides good physical security (additional steel reinforcement can be built into the panels) and protection from window blast in an outside explosion
- Protects from falling debris and water from above
- Removes the problems of dust and debris building up in a ceiling void (surface mounted lighting is fixed directly to ceiling panels)
- No harmful plaster dust from broken plasterboard panels
- Cost effective solution - only a small increase over traditional build as a proportion of total build and fit-out cost
- Meets Turnbull recommendation that Directors (or others ultimately responsible for the continuity of the organisation) follow a ‘best practice’ adherence to a set of operational risk factors – by building to the highest affordable *recognised* standard